

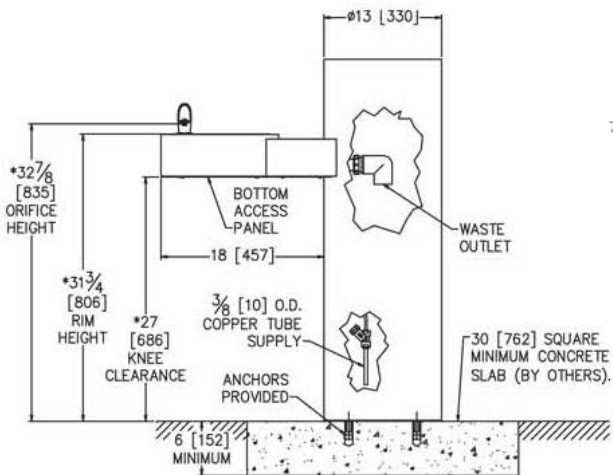
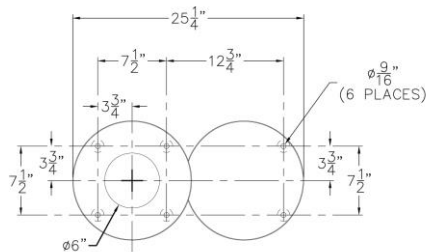
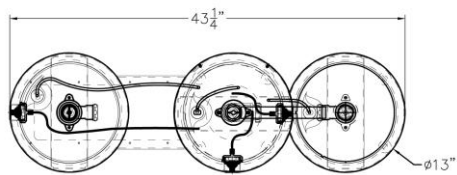
**DOG-ON-IT PARKS**

DOG-ON-IT-PARKS.COM

This pedestal style fountain offers ADA compliance (when installed properly) with a barrier free arm and a pet bowl. The unit features 12 gauge heavy duty stainless steel construction, an 18 gauge 304 stainless steel bowl and separate push button activation for both bubblers requiring less than five (5) pounds of force to operate. Unit comes with standard vandal resistant mounting plate and hardware. Fountain is certified to ANSI A117.1, Public Law 111-380 (No Lead), CHSC 116875, NSF/ANSI 61, Section 9. Fixture meets ADA, ADA Standing Person, and ADA Child requirements when mounted appropriately.



**Views:**



**7211  
BARRIER FREE  
FOUNTAIN W/  
PET BOWL**

**Water pressure  
range: 20-105 psig**

**15 powder coat  
colors to choose  
from**

**Optional: freeze  
resistant valves,  
leash hook and/or  
hose bibb**

**Certified Lead Free**

**DOG-ON-IT-PARKS**

4818 Evergreen Way  
Ste 250  
Everett, WA 98203  
P: 877-348-3647

[www.dog-on-it-parks.com](http://www.dog-on-it-parks.com)

Refer to installation manual for  
more detailed specifications

Copyright 2016

